

NOW  
AVAILABLE

# BRUNSWICK, OHIO

## Premier Medical/Professional Office Building in a Strategic Location

1299 INDUSTRIAL PARKWAY NORTH :: BRUNSWICK, OHIO



### NEW CLASS A OFFICE/MEDICAL SPACE FOR LEASE IMMEDIATELY

19,712 RSF on Second Floor

#### RENT:

\$ 17.50/PSF – NNN

\$4.50 Full Service (tax abated)

#### FEATURES:

- Custom designed suites from 5,000 square feet to entire floor of 19,712 sq. ft.
- Work directly with medical space planners to design the most efficient layout for your practice or professional office space
- First floor occupied by Digestive Disease Consultants

FOR MORE  
INFORMATION  
PLEASE  
CONTACT

**James Vanco**  
Vice President  
216.363.6412  
james.vanco@cbre.com

**CBRE**  
CB RICHARD ELLIS

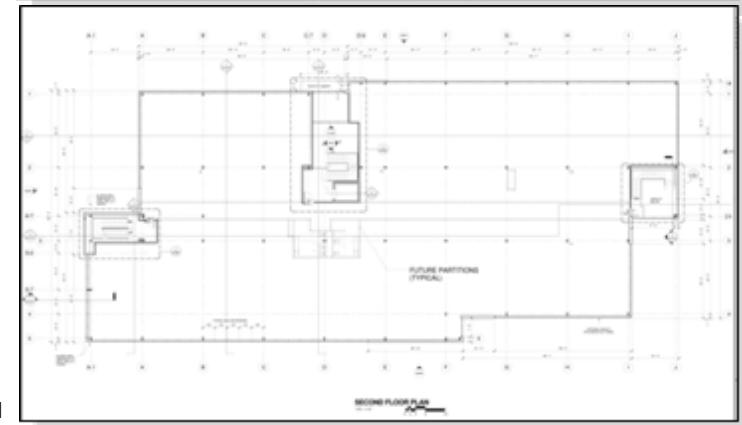
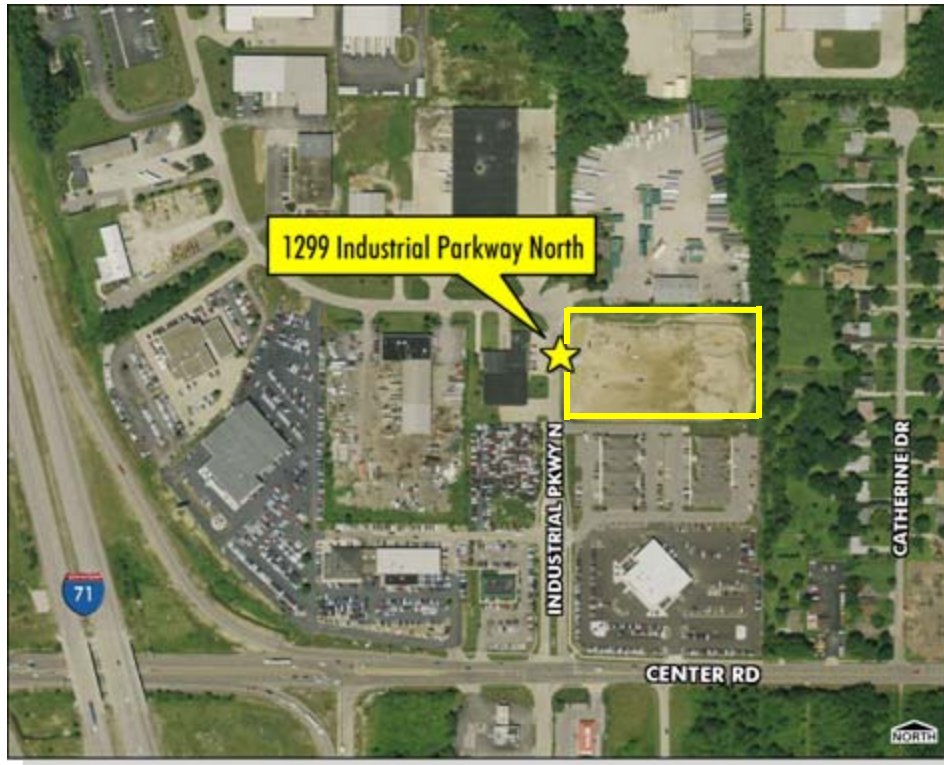
NOW  
AVAILABLE

# BRUNSWICK, OHIO

## Premier Medical/Professional Office Building in a Strategic Location

1299 INDUSTRIAL PARKWAY NORTH :: BRUNSWICK, OHIO

- Brand new State-of-the-Art building
- One minute from I-71 and Route 303
- Easily accessible to growing residential and retail developments



FOR MORE  
INFORMATION  
PLEASE  
CONTACT

**James Vanco**

Vice President

216.363.6412

[james.vanco@cbre.com](mailto:james.vanco@cbre.com)

CB Richard Ellis | 200 Public Square | Suite 2560 | Cleveland, OH 44114 | [www.cbre.com/cleveland](http://www.cbre.com/cleveland)

©2009 CB Richard Ellis, Inc. The information above has been obtained from sources believed reliable. While we do not doubt its accuracy, we have not verified it and make no guarantee, warranty or representation about it. It is your responsibility to independently confirm its accuracy and completeness.

CBRE, CB RICHARD ELLIS and the CBRE CB RICHARD ELLIS logo are service marks of CB Richard Ellis, Inc. and/or its affiliated or related companies in the United States and other countries. All other marks displayed on this document are the property of their respective owners.

Licensed Real Estate Broker

**CBRE**  
CB RICHARD ELLIS